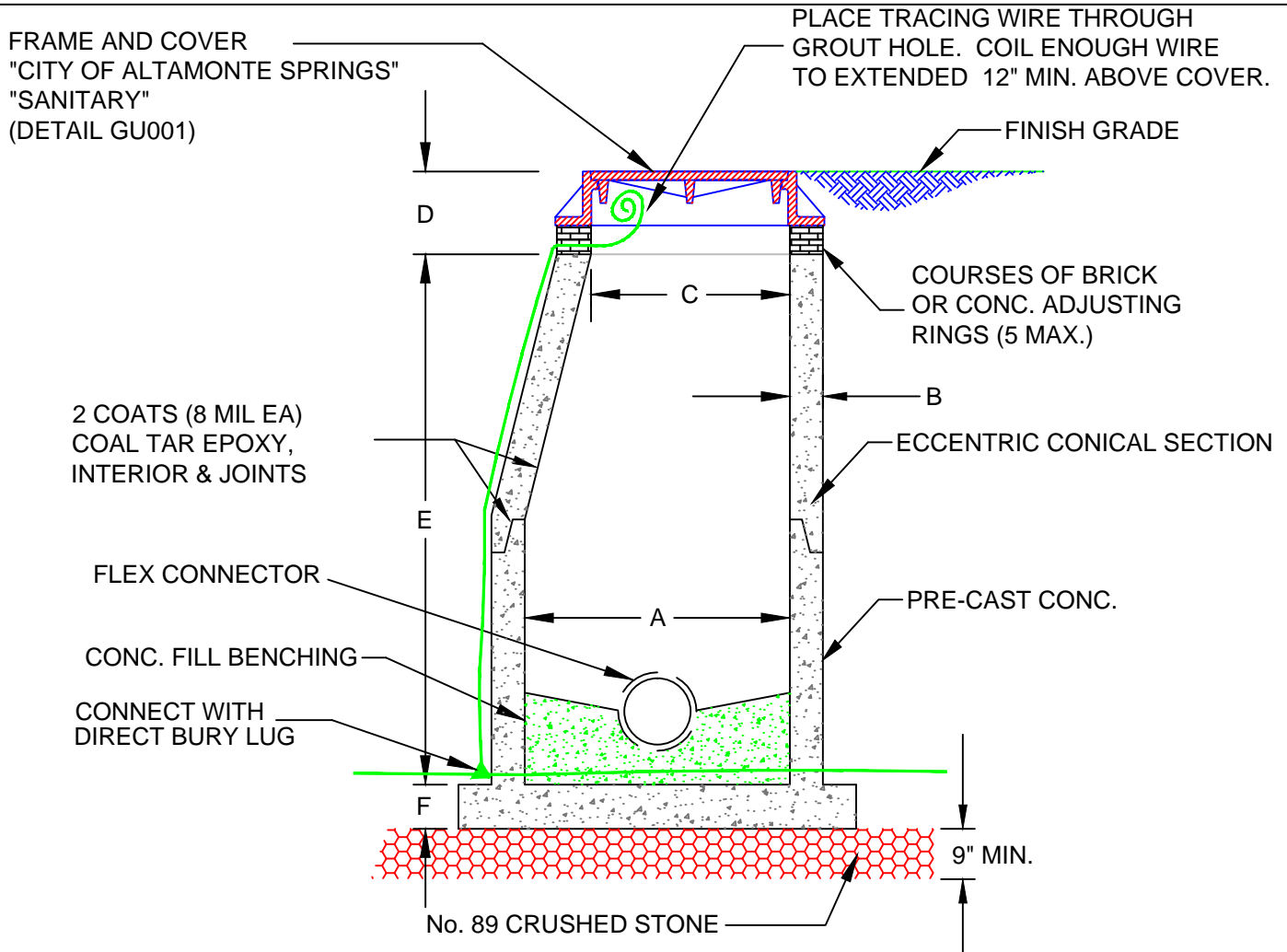


PUBLIC WORKS & UTILITIES ENGINEERING & DESIGN STANDARDS



NOTES:

1. PRE-CAST CONCRETE SHALL BE TYPE 2 CEMENT (4,000 PSI).
2. LIFT HOLES NOT PERMITTED THROUGH PRE-CAST SECTIONS
3. ALL OPENINGS SHALL BE SEALED WITH NON-SHRINK GROUT.
4. INSTALL FLOW CHANNEL INSIDE MANHOLES.
5. SERVICE LATERALS SHALL GENERALLY NOT BE PERMITTED DIRECTLY INTO MANHOLES.
6. PLACE TWO HALF-MOON SHAPED PLYWOOD (3/8" TH. MIN.) IN BOTTOM OF MANHOLE AFTER PIPES HAVE BEEN CONNECTED TO KEEP DEBRIS FROM ENTERING SEWER.
7. REINFORCING STEEL PER ASTM C478-88A.
8. PROVIDE 5' X 5' X 12" CONCRETE COLLAR AROUND COVER FRAME, WITH 4 - #4 REBAR E.W. IN UNPAVED AREAS.
9. INSTALL TRACING WIRE [GREEN] PER CITY DETAIL GU004.

MANHOLE SIZE

UP TO 24" PIPE 48" MANHOLE
 UP TO 36" PIPE 60" MANHOLE
 OVER 36" PIPE 72" MANHOLE

MH DEPTH	A	B	C	D	E	F
UP TO 12'	48"	6"	36"	15"	AS REQ'D	8"
12' TO 18'	60"	8"	36"	15"	AS REQ'D	10"
18' AND DEEPER	72"	8"	36"	15"	AS REQ'D	14"



CITY OF ALTAMONTE SPRINGS
 950 CALABRIA DRIVE
 ALTAMONTE SPRINGS, FLORIDA 32714

STANDARD MANHOLE DETAIL

SS003-2

ISSUED 2017

REVISED 03/01/2017 BY DJB